

 **INTERSTATE® BRICK**
More Sizes, More Shapes, More Possibilities



Architectural Series

Interstate Brick: Beautiful, Durable, Sustainable!

The founders of Interstate Brick established one simple goal in 1891: To be the best brick manufacturer in North America. Today, that goal has been transformed into thousands of notable buildings from coast to coast.

We provide brick veneer, paving brick, and thin brick for a wide range of projects from single family residential to 20-story sky scrapers. What sets Interstate Brick's products apart is our 16 inch Emperor™ face brick and our 16" Atlas™ structural brick in sizes from modular to 8x8x16 and 10x4x16. What sets Interstate Brick's service apart is our experienced sales team with technical leadership.

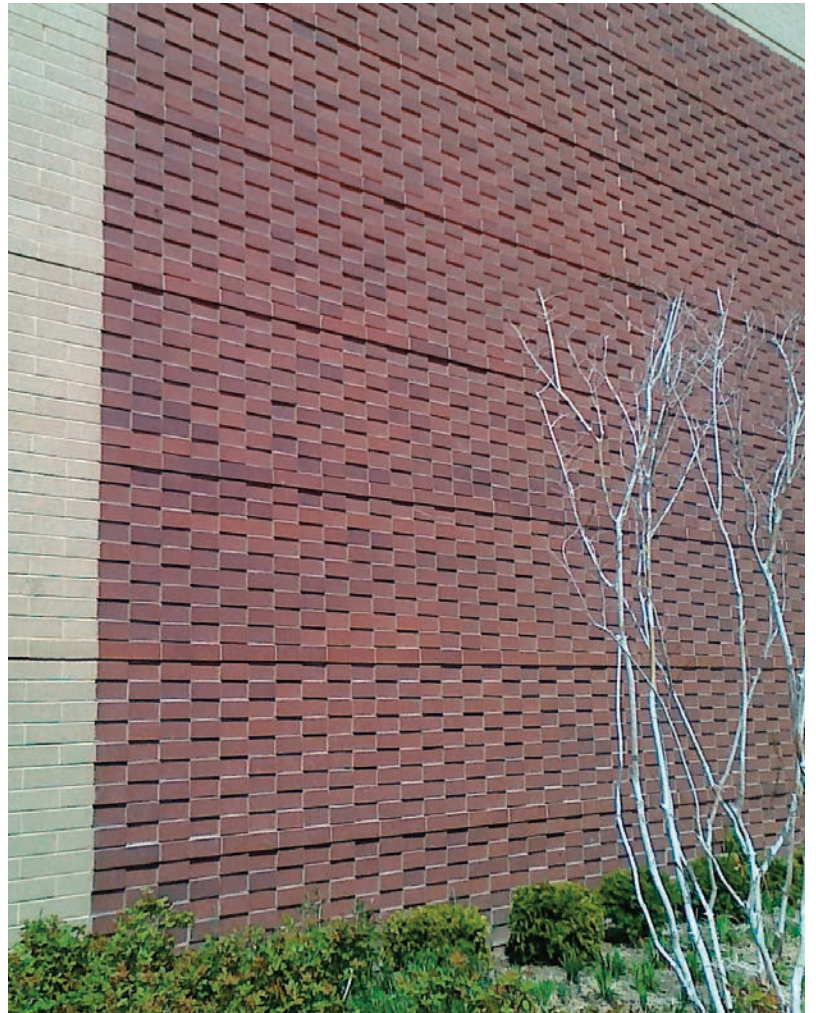
Our focus is on systems analysis and design. We assist architects and engineers with design ideas and details for a variety of build-ing envelope solutions. We understand codes and specification guidelines. Our brick can be utilized to meet design parameters for any climate zone and natural disaster potential in North America, even bomb blast and ballistics considerations. Interstate Brick is the industry benchmark!

Fired clay brick have low embodied energy, one of the lowest life cycle costs, and the durability of stone. Interstate's brick are made from blends of natural clays, post industrial, and post consumer recycled brick. For these properties and thermal performance Interstate's bricks have contributed to many LEED certified projects across the country.

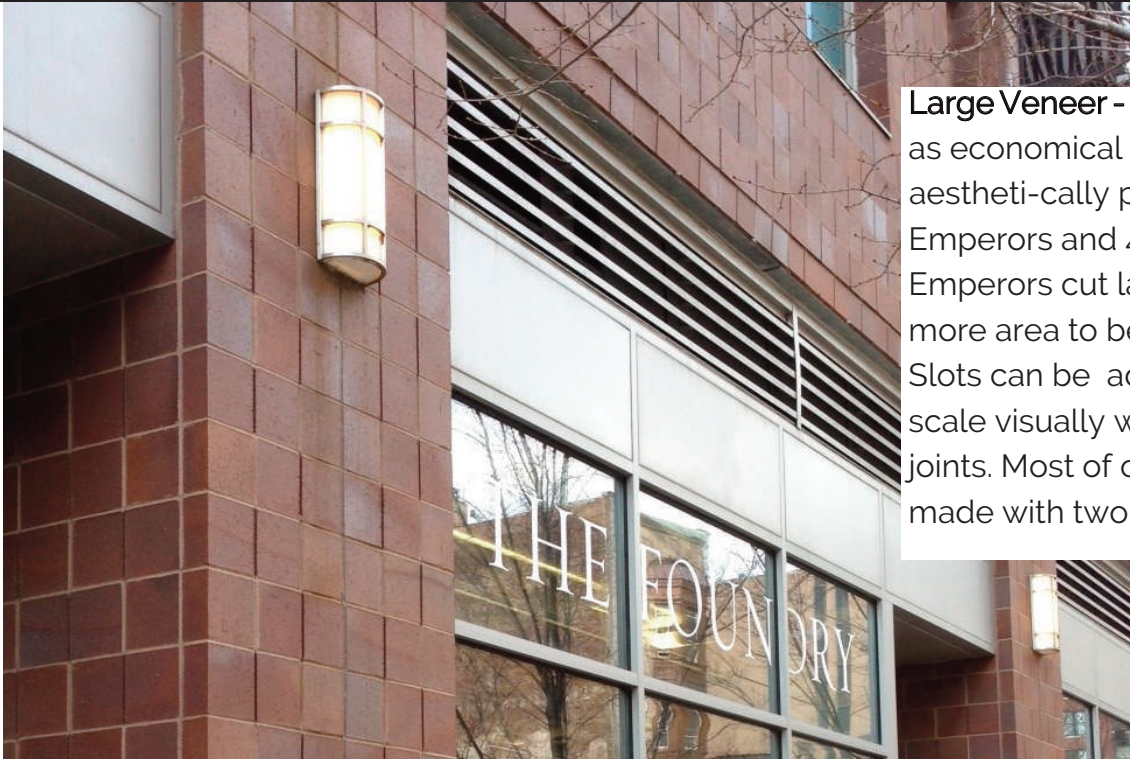
Our production process has set the industry EPA MACT standard for clean air, and our waste water is reclaimed on site to tertiary standards.

Interstate Brick is your sustainable solution!

Interstate Brick: Imagine the Options!



Interstate Brick: Bigger, Faster, Better!

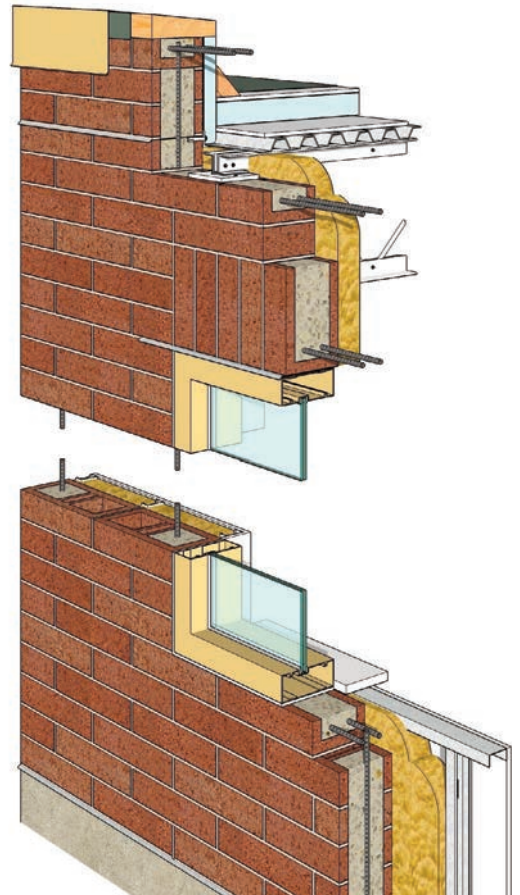


Large Veneer - makes large projects as economical as they are aesthetically pleasing. Our 4x4x16 Emperors and 4x8x16 Super Emperors cut labor costs by allowing more area to be laid with each brick. Slots can be added to reduce the scale visually while eliminating head joints. Most of our Emperor brick are made with two finished faces.



Interstate Brick: Secure, Safe, Supportive!

Atlas™ Structural Brick - combines the beauty and strength of face brick with the economy of larger sizes and through-the-wall capabilities. Atlas brick are ideally suited for load-bearing walls, columns, beams, prefabricated panels, curtain walls, and structural brick ve-neer. Stronger than CMU, Atlas™ systems are often thinner and smaller and occupy less building space. Compared to multi-wythe brick walls, Atlas walls are usually less complicated, more efficient and less costly. They can be designed for earthquakes, hurricanes and tornadoes. Our Atlas Armor brick are ballistics rated.



Interstate Brick: Your Lightweight Option!



Thin Brick - is the industry solution for a light weight building facing material. Interstate Thin brick are available in almost every size, color and texture offered in a face brick and are suitable for every type of installation. We recently invested in a new extrusion line for thin brick. We are serious about it.



Arctic White



Almond



Ash



Pewter



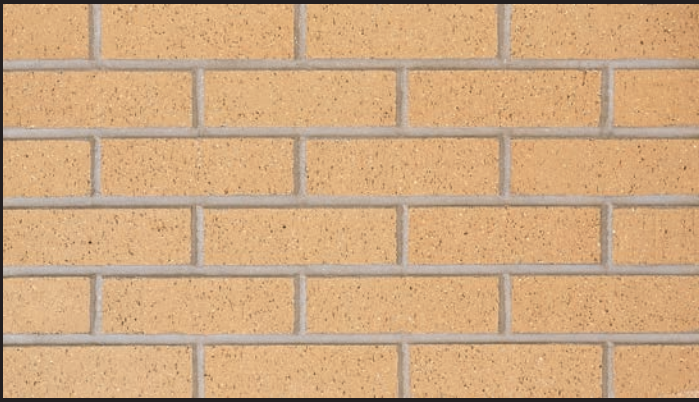
Platinum



Midnight Black

The printed colors shown in this brochure may vary from actual brick samples.
We recommend color selection be made from actual brick samples.





Desert Sand



Tumbleweed



Cedar



Mocha

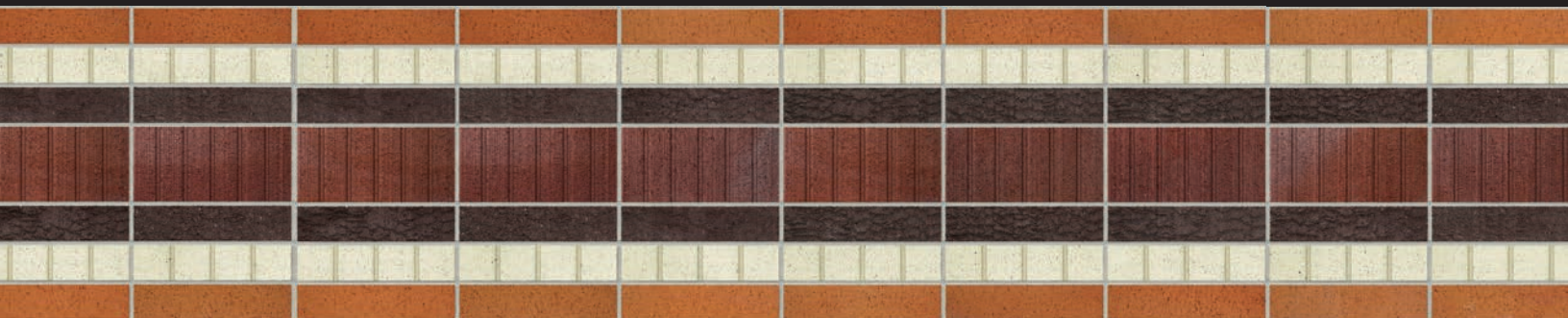


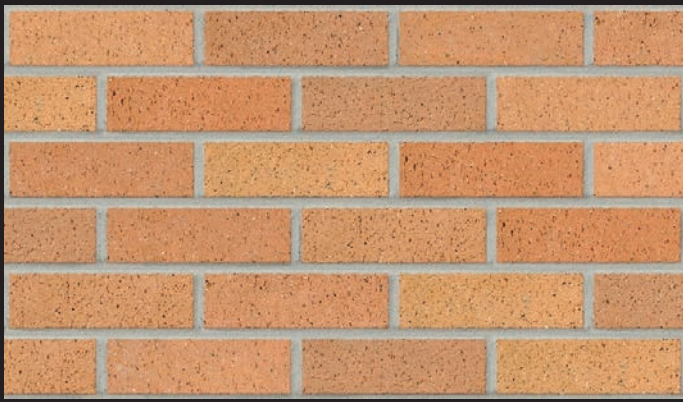
Smokey Mountain



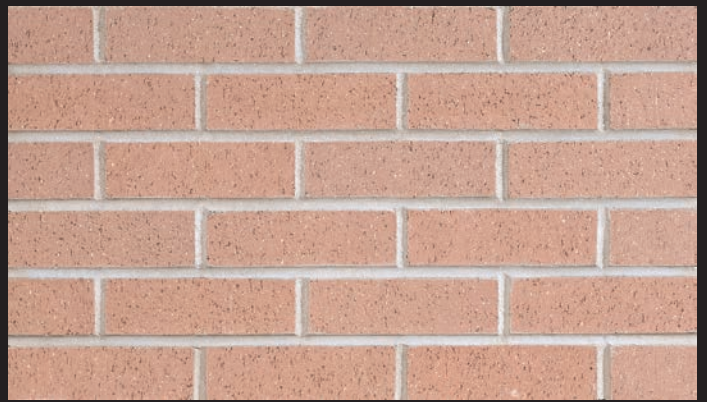
Ochre Buff

The printed colors shown in this brochure may vary from actual brick samples.
We recommend color selection be made from actual brick samples.

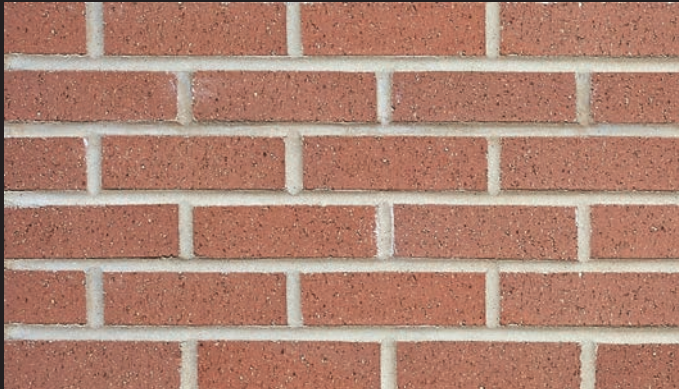




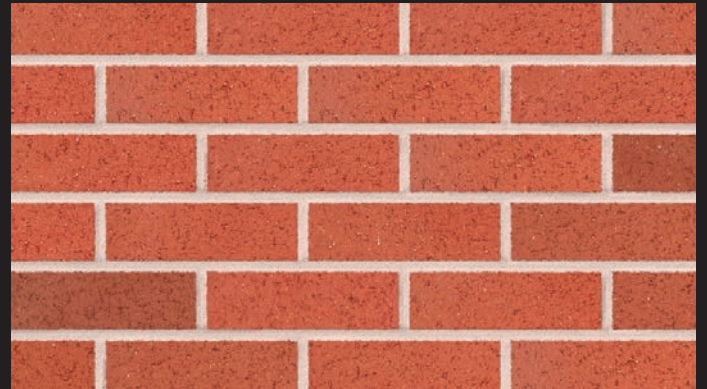
Golden Buff



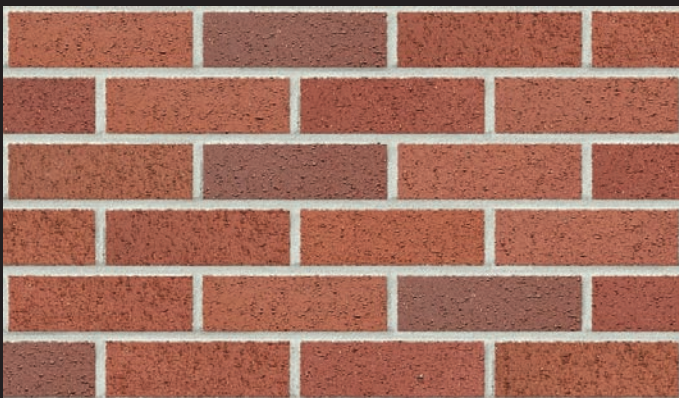
Canyon Rose



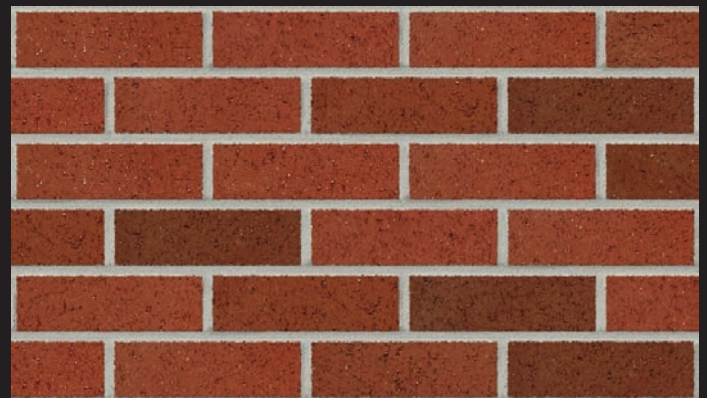
Park Rose



Terra Cotta

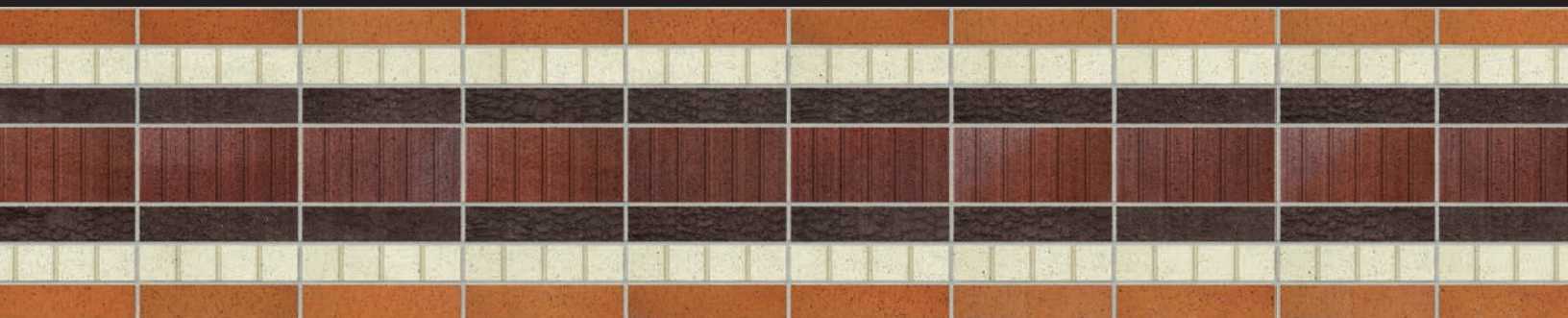


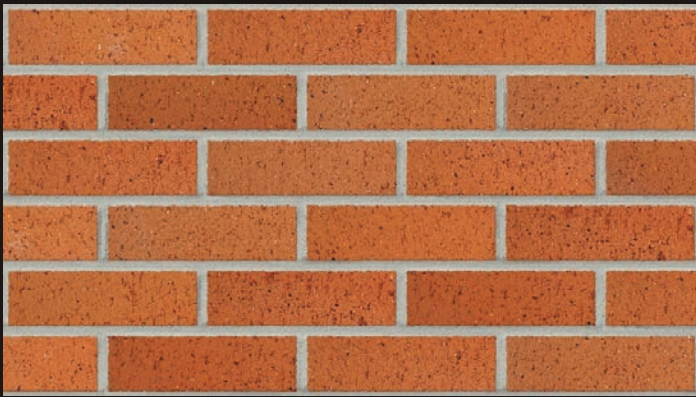
Monterey



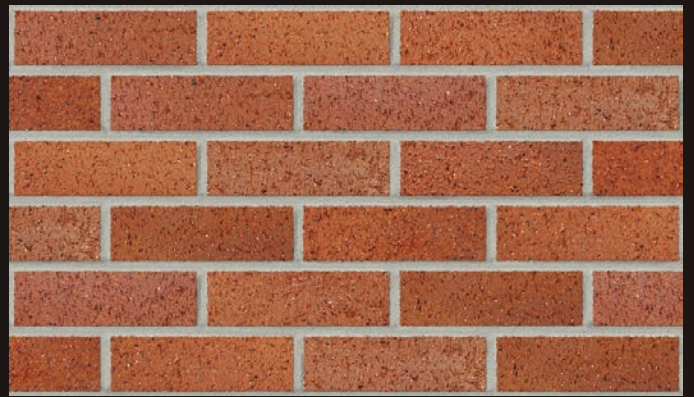
Mountain Red

The printed colors shown in this brochure may vary from actual brick samples.
We recommend color selection be made from actual brick samples.

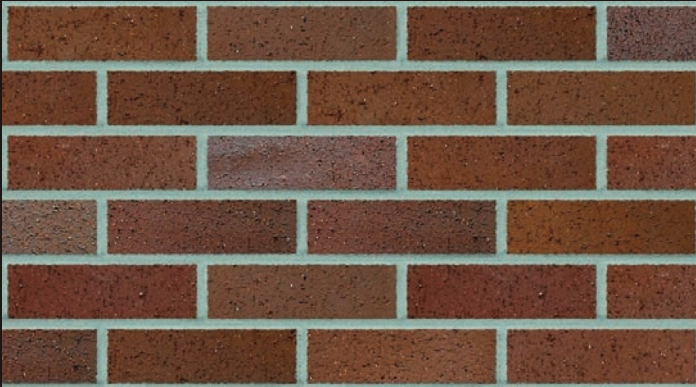




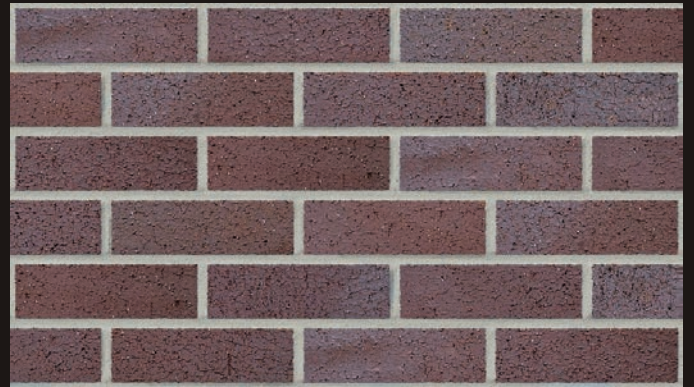
Copperstone



Bronzestone



Walnut



Ironstone



Obsidian



Black Ice

The printed colors shown in this brochure may vary from actual brick samples.
We recommend color selection be made from actual brick samples.





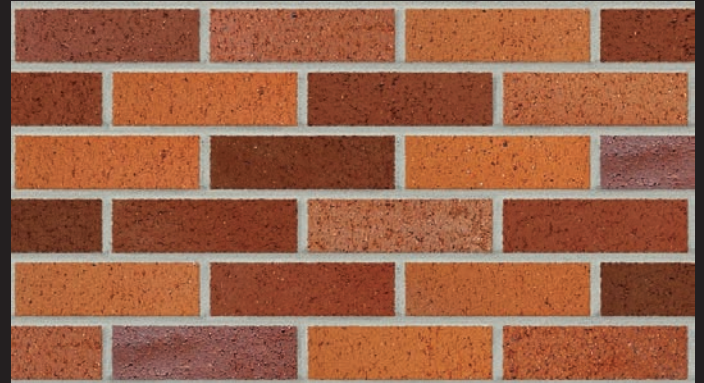
Desert Sand, Tumbleweed, Golden Buff



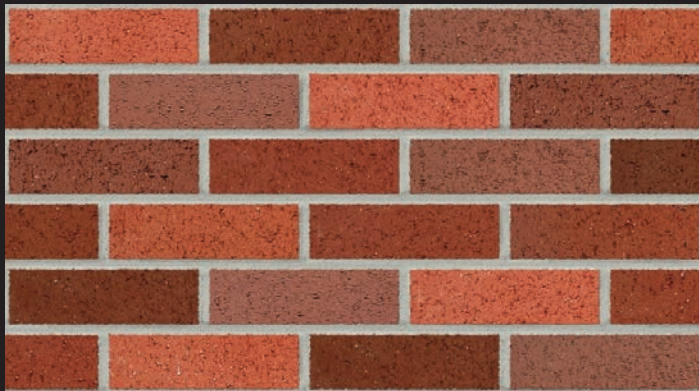
Platinum, Smokey Mountain, Tumbleweed



Arctic White, Ash, Pewter



Copperstone, Ironstone, Bronzestone



Mtn Red, Monterey, Terracotta



Mountain Red, Midnight Black

The blends shown are a representation of the many possible color options there are with Interstate Brick. Actual patterns are subject to actual runs, percentages of each color and installation procedures. We recommend color selection be made from actual brick samples in a mock-up panel installed prior to construction.



LINE 4 - ARCHITECTURAL SERIES

Color	2-1/4 Modular	2-1/2 Modular	2-3/4 Modular	3-9/16 Modular	7-9/16 Modular	2-1/4 Norman	2-1/2 Norman	2-3/4 Norman	3-9/16 Norman	2-1/4 Emperor	2-1/2 Emperor	2-3/4 Emperor	3-9/16 Emperor	7-9/16 Emperor	6x4x12 Atlas	8x4x12 Atlas	4x4x16 Atlas	6x4x16 Atlas	6x8x16 Atlas	8x4x16 Atlas	8x8x16 Atlas	10x4x16 Atlas
Almond	S								S				S						NA	S	NA	
Arctic White	S								S				S						NA	S	NA	
Ash	S								S				S						NA	S	NA	
Black Ice	S								S				S							S		
Bronzestone	S								S				S							S		
Canyon Rose	S								S				S							S		
Cedar	S								S				S						NA	S	NA	
Copperstone	S								S				S							S		
Desert Sand	S								S				S						NA	S	NA	
Golden Buff	S								S				S						NA	S	NA	
Ironstone	S								S				S						NA	S	NA	
Midnight Black	S								S				S							S		
Mocha	S								S				S							S		
Monterey	S								S				S							S		
Mountain Red	S								S				S							S		
Obsidian	S								S				S							S		
Ochre Buff	S								S				S						NA	S	NA	
Park Rose	S								S				S							S		
Pewter	S								S				S						NA	S	NA	
Platinum	S								S				S						NA	S	NA	
Smokey Mountain	S								S				S						NA	S	NA	
Terra Cotta	S								S				S							S		
Tumbleweed	S								S				S						NA	S	NA	
Walnut	S								S				S							S		

Notes

All Brick are available in **Matte, Smooth, Antique, Ruff and Scratch** textures unless noted.

Colors and Sizes highlighted in **Yellow** are **not** available in **Smooth** texture.

NA - indicates colors are not available in Super Atlas.

S - indicates brick are **available** in **Matte** texture in limited stocking quantities.

Contact Interstate Brick for other colors not listed in matrix above.



9780 South 5200 West
West Jordan, Utah 84081-5625
(801) 280-5200

interstatebrick.com

F.20